



# Xe-90/145M Series Controllers

Rotary Compressors



# Maximize Intelligent Control

Ingersoll Rand Xe-Series compressor controls do more to enhance the productivity, efficiency and reliability of your air compressor.



## A Controller that Improves Productivity

Important compressor information is easy to find, thanks to the Xe-Series controller's intuitive, high-resolution color display (available in 3.5" or 5.7"). The controller features useful timers, compressor information and LED alerts that indicate when maintenance is necessary to help optimize care of your investment. The controller also posts information that users can access on a local web page. It even sends email notifications when it detects a problem.

The Xe-Series utilizes the most advanced control algorithms to provide the lowest energy consumption and best reliability in every situation. Achieving best-in-class performance is very important at Ingersoll Rand.

## Easy Navigation

Tabbed page layout for simple and fast navigation.

Easy-to-read display provides a dynamic visual of your air compressor's operation.



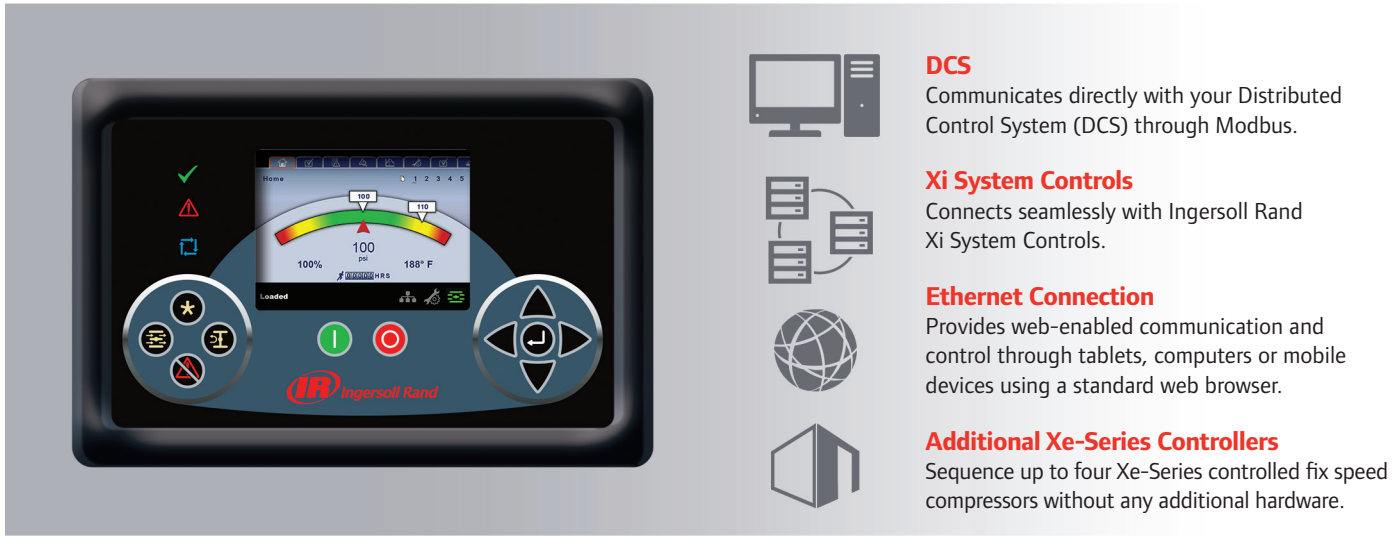
Home pages provide access to the most important information.

Graphing and data acquisition available on screen or via web pages (Xe-145M only). Over 30 parameters available!

Convenient timers track your maintenance intervals, keeping your compressor operating at optimal performance.

# Connect Like Never Before

The Xe-Series controllers provide maximum flexibility and convenience through a full range of connection choices.



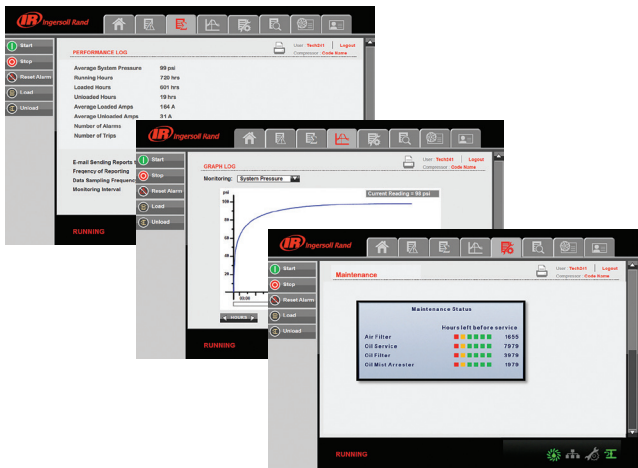
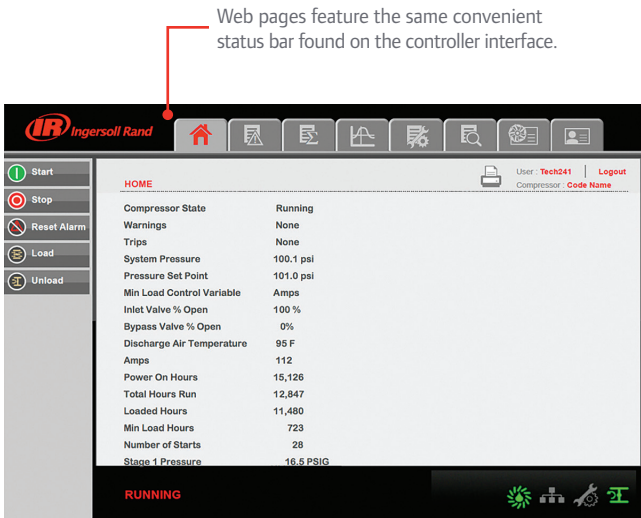
Direct connectivity to Xi System controllers allows you to monitor all critical system and equipment parameters so you'll be proactively alerted.



# Communicate from Virtually Anywhere

Xe-Series controllers communicate vital compressor information in a variety of user-friendly formats.

## Transmitting vital information using a standard web browser...



- Check and adjust parameters remotely
- Review, sort and filter over 250 events with the built-in log
- Receive email notifications of alarms and trips
- Schedule equipment maintenance
- Facilitate inspections with integrated inspection log
- Graph selected parameters\*
- Generate performance reports and schedule automatic emails to receive them\*
- Download trending data to external applications\*

...from any  
computer or  
mobile device!



# Built-in Reliability and Efficiency

With built-in control logic, Xe-Series controls provide you with optimal safety, reliability and energy savings from your compressor. A variety of standard and optional control features gives you more ways to effectively manage and monitor your investment.



PAC™ prevents unexpected downtime by continuously monitoring and adjusting key operation parameters. It increases bearing life by eliminating water build-up in the coolant. It optimizes energy consumption and reduces noise by adjusting blower speed (on Nirvana variable speed drive [VSD] compressors).



Real-time clock allows scheduled starts and stops, which helps reduce wasted air during off-hours.



Built-in performance analysis and visual trending help optimize efficiency, plan maintenance and avoid downtime.



Automatic emails broadcast warning/trip conditions and performance reports.



Sequence up to four Xe-Series controlled fix speed compressors without any additional hardware.

\* Only Xe-145M



# Xe-Series Retrofit

The next level in connectivity, communication and control!

## The Latest in Connectivity

Adding an Xe-Series controller to an existing compressor provides a dedicated RS-485 port that allows direct connectivity with our Xi System controls. This enables communication with DCU systems as well as an Ethernet port that enables the posting of rich content and remote control via web pages. The Ethernet port also supports Modbus TCP communication and control. An integrated SD card will record the last 30 days of all critical parameters.

## Constant Communication

The Xe-Series controller's intuitive, high-resolution color display enables quick and easy retrieval of all critical compressor data. Information can be accessed when and where you choose via web pages posted on the local area network. Warnings, trips and key reports can be emailed automatically to user-specified recipients.



## Superior Control

The Xe-Series controller optimizes compressor operation for better energy efficiency. Parallel processors manage control functions and web functions separately, assuring that the control algorithms have all the capacity they need to deliver the lowest energy consumption for any operating condition.



Upgrading to the Xe-Series is as easy as 1, 2, 3.  
It's an ideal retrofit for all Intellisys™ SG-equipped air compressors.

The Xe-Series controller plugs into the same opening and connections used by the SG, so your Ingersoll Rand service representative can quickly install for a seamless transition.

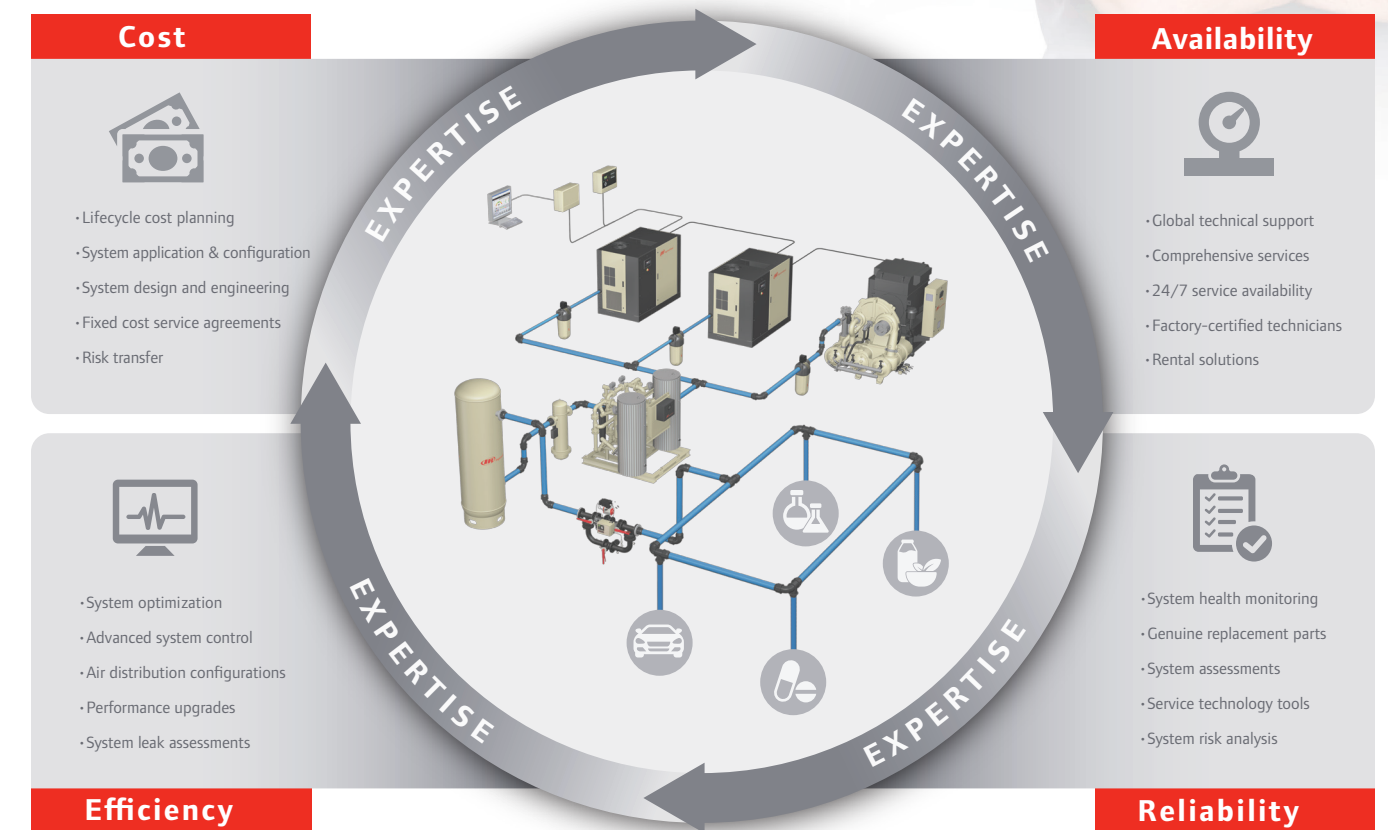
# Your Trusted Partner in Compressed Air

Ingersoll Rand products and services optimize total cost of ownership, while maximizing availability, reliability and efficiency for the entire lifecycle of your system.



## SYSTEM LIFECYCLE CARE

Design • Install • Commission • Operate • Maintain • Extend



Optimize total **C**ost of ownership, while maximizing **A**vailability, **R**eliability and **E**fficiency

## PackageCARE™...eliminate the inconvenience

No matter where your facility is located, Ingersoll Rand is committed to serving you 24 hours a day, seven days a week, available to support you with innovative and cost-effective service solutions that will keep you running at peak performance. Let Ingersoll Rand handle the pressures and responsibilities of owning a compressed air system with our signature service contract.





Ingersoll Rand (NYSE:IR) advances the quality of life by creating comfortable, sustainable and efficient environments. Our people and our family of brands—including Club Car®, Ingersoll Rand®, Thermo King® and Trane®—work together to enhance the quality and comfort of air in homes and buildings; transport and protect food and perishables; and increase industrial productivity and efficiency. We are a \$13 billion global business committed to a world of sustainable progress and enduring results.



[www.ingersollrandproducts.com](http://www.ingersollrandproducts.com)

Distributed by:



Ingersoll Rand, IR, the IR logo, Intellisys, PackageCARE and PAC are trademarks of Ingersoll Rand, its subsidiaries and/or affiliates. All other trademarks are the property of their respective owners.

Ingersoll Rand compressors are not designed, intended or approved for breathing air applications. Ingersoll Rand does not approve specialized equipment for breathing air applications and assumes no responsibility or liability for compressors used for breathing air service.

Nothing contained on these pages is intended to extend any warranty or representation, expressed or implied, regarding the product described herein. Any such warranties or other terms and conditions of sale of products shall be in accordance with Ingersoll Rand's standard terms and conditions of sale for such products, which are available upon request.

Product improvement is a continuing goal at Ingersoll Rand. Designs and specifications are subject to change without notice or obligation.